

# 2025 HERITAGE REGATTA

## SAILING INSTRUCTIONS

August 23, 2025 at the Lido Isle Yacht Club  
Organizing Authority: Fleet 1 of the Harbor 20 Class Association

### 1. RULES

- 1.1. One race is scheduled. The race will utilize a pursuit or reverse handicap start. Individual start times will be determined based on the skipper and crew listed on the registration form. Any changes to registered skipper and/or crew must be communicated to the Race Committee before 1300 hours on August 23. The start time assignments for all registered boats will be announced at the competitors Meeting.
- 1.2. The regatta will be governed by the Racing Rules of Sailing and Harbor 20 Fleet 1 Bylaws.
- 1.3. Only the skipper designated on the registration may helm the boat during the race, except for momentary relief in non-tactical situations.
- 1.4. RRS 44.1 and 44.2 is changed so that only one tack and one gybe is required.

### 2. CHANGES TO THE SAILING INSTRUCTIONS

Any change to the sailing instructions will be made verbally by the Race Committee (RC).

### 3. SCHEDULE

<u>Saturday, September 4</u>	<u>Hour</u>
Competitors Meeting	1330
First Warning	1400
No warning signal given after	1600
Trophy presentation during the Summer Party	After racing

### 4. RACING AREA

Racing will take place in Newport Harbor.

### 5. COURSES

- 5.1. The attached Newport Harbor Racecourse Markers chart shows the approximate locations of possible marks to be utilized for the courses to be sailed.
- 5.2. No later than 1345 hours, the course to be sailed will be displayed on the main dock.
- 5.3. After the starting signal, the RC may change the course or abandon the race with verbal signals. This changes Rules 32 and 33.

### 6. MARKS

- 6.1. The marks will be as follows:

MARK	DESCRIPTION
P, Q, R, T, U, W, X, Y, Z	Permanent harbor marker
Start, Finish	ORANGE inflatable ball

- 6.2. The starting/finishing line marks are not *marks* of the course except when *starting* or *finishing*.
- 6.3. All marks are to be left to port unless otherwise indicated.

## **7. THE START/FINISH**

- 7.1. All races will be started using RRS US Sailing Prescription Appendix U for the first start. Subsequent starts will occur at intervals to be distributed to each skipper no later than 1330 hours.
- 7.2. The start line will be between the course side of a staff displaying an orange flag on the RC signal boat and the course side of a nearby start *mark* approximately to port.
- 7.3. If any part of a boat's hull, crew or appendage is on the course side of the starting line or one of its extensions during the last minute before her starting signal, she shall thereafter sail from the course side across an extension to the pre-start side before starting.
- 7.4. The start line is restricted.
- 7.5. The finish line will be between the course side of an blue flag on an R/C boat and the course side of a nearby finish mark.

## **8. TIME LIMIT**

- 8.1. The time limit for the boats to finish will be two (2) hours.
- 8.2. A boat that fails to finish within two (2) hours of the will be scored according to her relative position on the course at that time. This changes RRS 35, A4, A5, and A11.

## **9. PROTESTS**

The RC must be informed of a protest by the protesting boat prior to her finish. Hearings will be informal and heard as soon as possible after the race by a Protest Committee selected by the RC. The hearing format will be determined by the Protest Committee. This changes RRS prescription 63.

## **10. SCORING**

The Low Point Scoring System in RRS Appendix A will apply, except that no scores will be excluded.

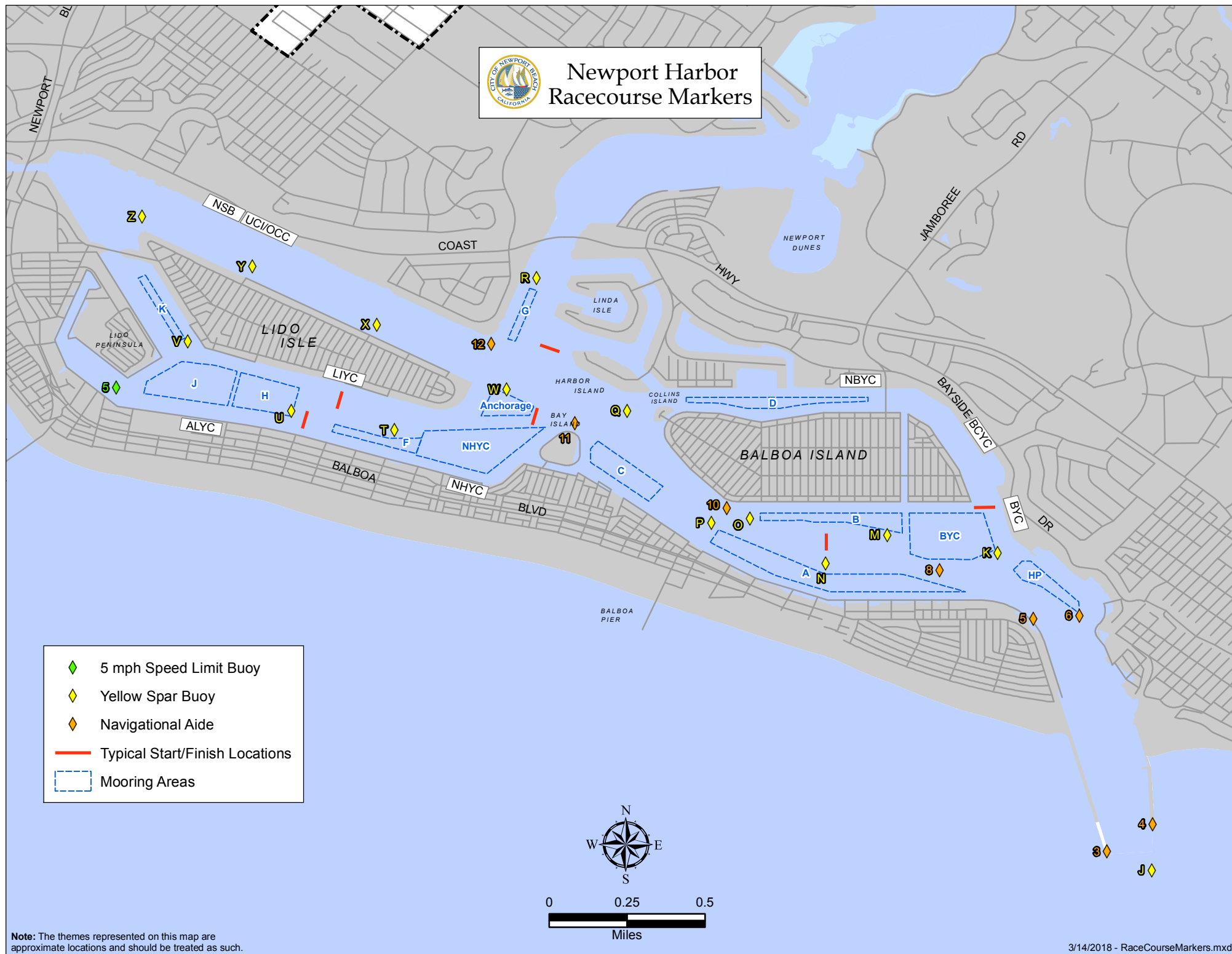
## **11. TROPHIES**

- 11.1. Prizes will be awarded after the last boat has finished.
- 11.2. The Harbor Heritage Perpetual Trophy will be awarded to the boat determined by the RC to be the winner.

## END ##



# Newport Harbor Racecourse Markers



**Note:** The themes represented on this map are approximate locations and should be treated as such.